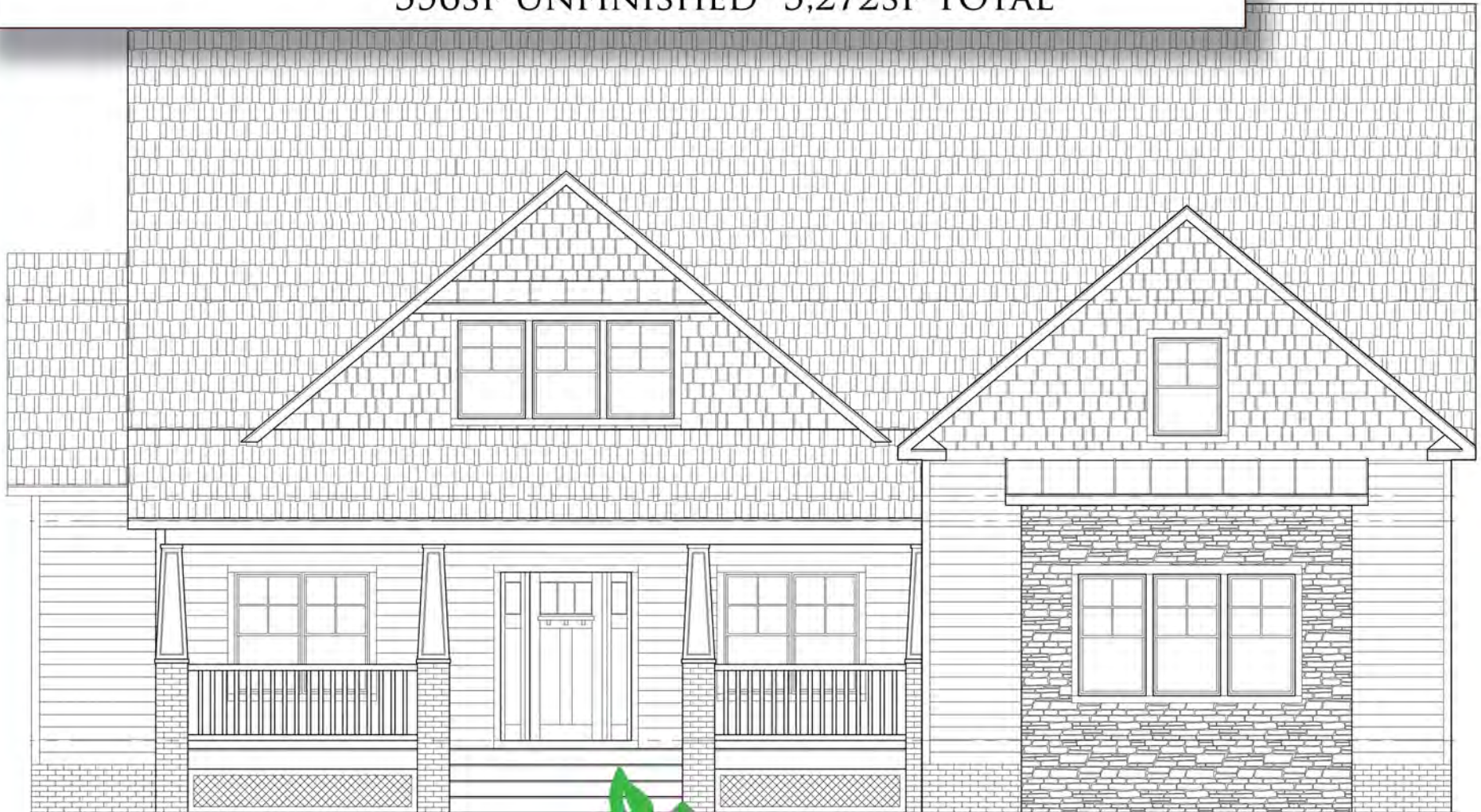


THE WILLINGHAM

2,009SF FIRST FLOOR 1,263SF SECOND FLOOR
356SF UNFINISHED 3,272SF TOTAL



THE WILLINGHAM

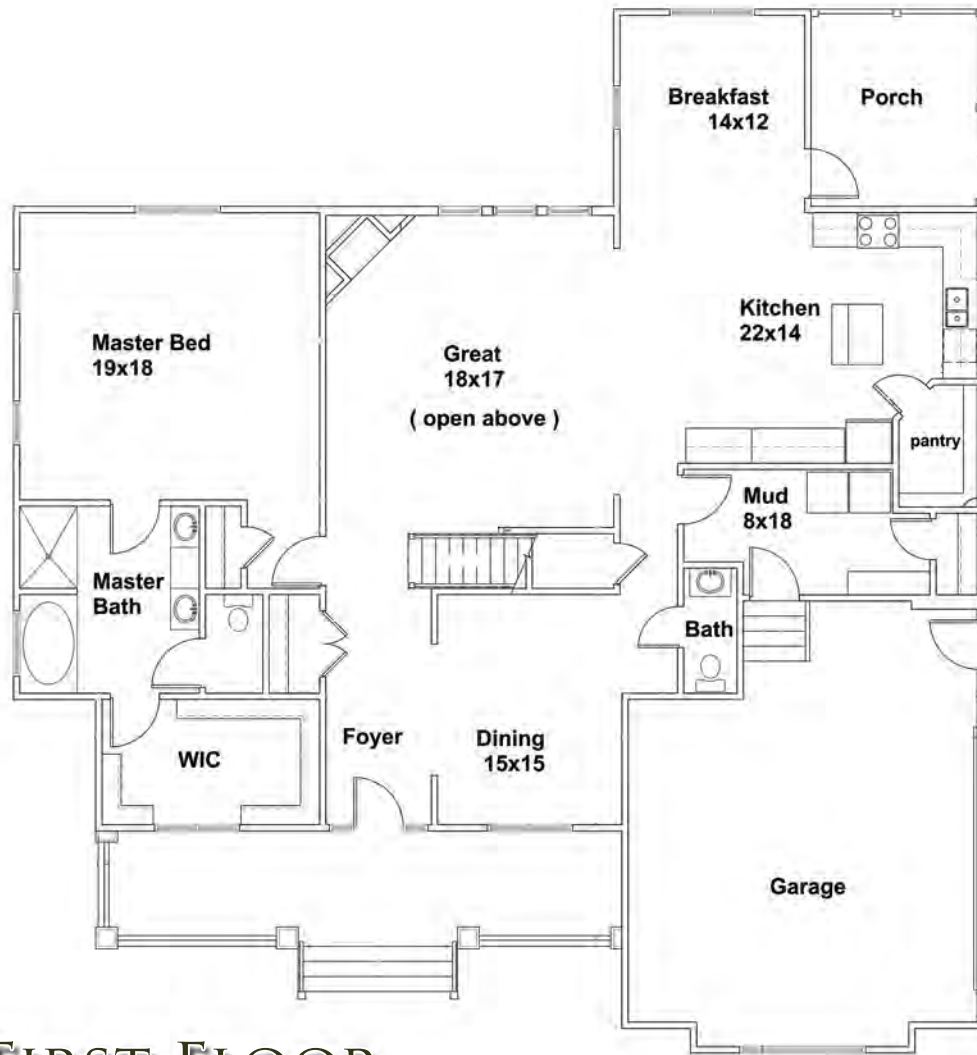
COLONIAL ELEVATION



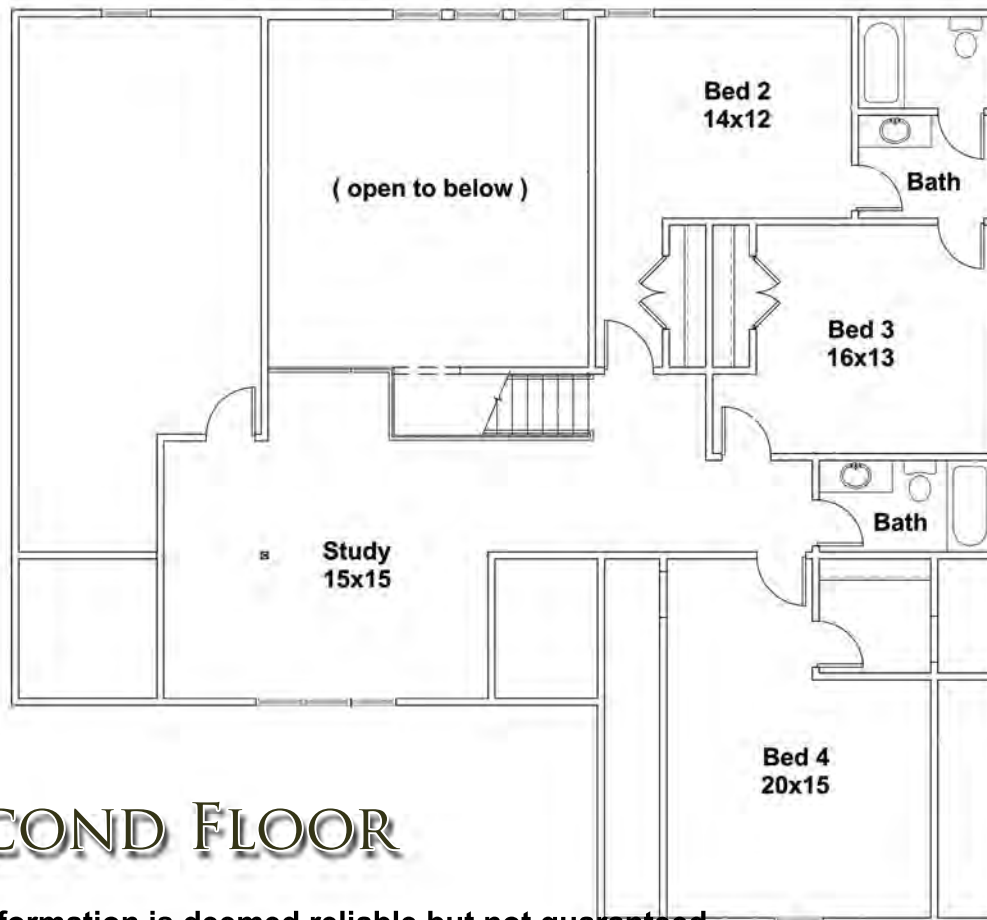
**COYNER CO.**
ENERGY EFFICIENT HOMES



Coyner Construction LLC P.O. Box 2607 Chester, Virginia 23836 804.536.0308 www.Coynerco.com mcoyner@gmail.com



FIRST FLOOR



SECOND FLOOR

All information is deemed reliable but not guaranteed.